



## Workbooks and exercises

Advanced database deployment

Oracle components

Smallworld Electric Office makes use of the following technologies provided by Oracle Database 10g Enterprise Edition:

- **Oracle Spatial** is a set of tools to store spatial (vector) data to the server, query it and manipulate it.
- **SDOAPI** is a user-residing library, which is normally embedded within Oracle's Java Virtual Machine. SDOAPI is an application server component for producing web pages from Oracle Spatial. Smallworld Electric Office uses part of its for rendering and selection queries.
- **Topology** performs a short relational mapping, enabling users in the facilities to appear as objects in Java.
- **Network Data Model** is Java engine that allows tracing of connected network. Defined by a node and link model in the database.
- **Oracle Workspace Manager** allows an application to provide facilities for creating and managing workspaces.

Advanced database deployment

### Advanced database deployment

This workbook provides step-by-step exercises for installing and setting up the database. When installing the Smallworld Electric Office database you should follow the steps in the same order as described here.

The tasks described in this section are carried out with standard Oracle facilities, before the Smallworld Electric Office applications can be used. This includes installing Oracle Database 10g Enterprise Edition, with Oracle Workspace Manager, and creating an Oracle Database instance, with a net service to access it.

In a real deployment your company's database administrator (DBA) may be required for some or all of these tasks.

- For general information about the use of Oracle facilities by Smallworld Electric Office, see *Installing Smallworld Electric Office: Appendix A, Installing and using Oracle Database*.
- For further installation details, see *Installing Smallworld Electric Office: Section 3, Setting up a Smallworld Electric Office Database*.

Exercise 1 Installing Oracle

In this exercise you will install the following Oracle components:

- Oracle 10g base version 10.2.0.1.0 base version for Microsoft Windows (32-Bit)
- Oracle upgrade patch p252704\_10201\_W2007

1. **Install Oracle 10.2.0.1.0 base version**

1. Copy the installation folder Oracle10gR2\_10 to your C drive. (Refer to your trainer for the location of this folder.) Alternatively, insert the Oracle Database 10g installation disk into your drive or download 10.2.0.1.0 base version for Microsoft Windows (32-Bit) from the Oracle support site.
2. Double-click **SETUP.EXE** to run the installation wizard. The Oracle Database 10g installation Wizard is displayed.
3. Click **Basic Installation** (selected by default).
4. In the **Oracle Home Location** box, enter the path name of your installation folder or click **Browse** to locate the folder.
5. Clear the **Create Starter Database** checkbox and click **Next**.
6. When the **Product-Specific Pre-configure Checks** page is displayed, wait for the installer to verify that your environment meets the minimum requirements, then click **Next**. (You can ignore the DHCP warnings.)
7. When the Oracle Summary page is displayed, click **Install**.
8. The **End of Installation** page is displayed, indicating that the installation is successful.
9. Show a note of important files and settings:
  - 1. Oracle base version installation path:
    - 1. Oracle components:
10. Click **Exit** and then click **Yes** to confirm you wish to exit.

We have now installed the Oracle 10g base version. An installation program menu is set up on the Windows Start menu, under **All Programs > Oracle10g\_base1**.

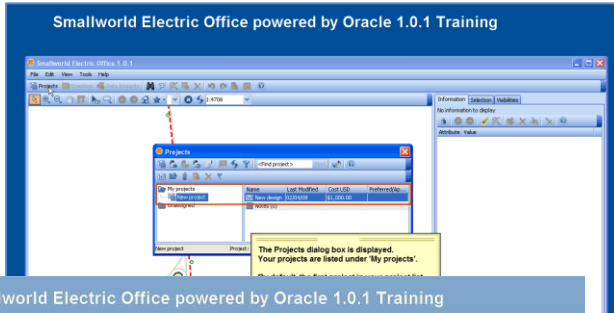
Install Oracle upgrade patch 10.2.0.5

1. Copy the file p252704\_10201\_W2007.zip to your C drive and open the file. (Refer to your trainer for the location of this file.) Alternatively, download the Oracle patch number p252704\_10201\_W2007 from the Oracle support site: <http://metalink.oracle.com>. (You will need an Oracle support account.)
2. Double-click **Oracle setup.exe**.
3. The Oracle Database Installer wizard is displayed.
2. Click **Next** to display the **Specify Home Details** page.

Smallworld Electric Office Administration Training – Unit 402 Page 2

- Provide professional training to your customers
- Presentations with speaker notes
- Delegate exercises

## Smallworld Electric Office powered by Oracle 1.0.1 Training



## Smallworld Electric Office powered by Oracle 1.0.1 Training

### Introduction to the Design application

This demonstration guides you through the steps required to log in to the Design application and open a design.

Click 'Next' to continue

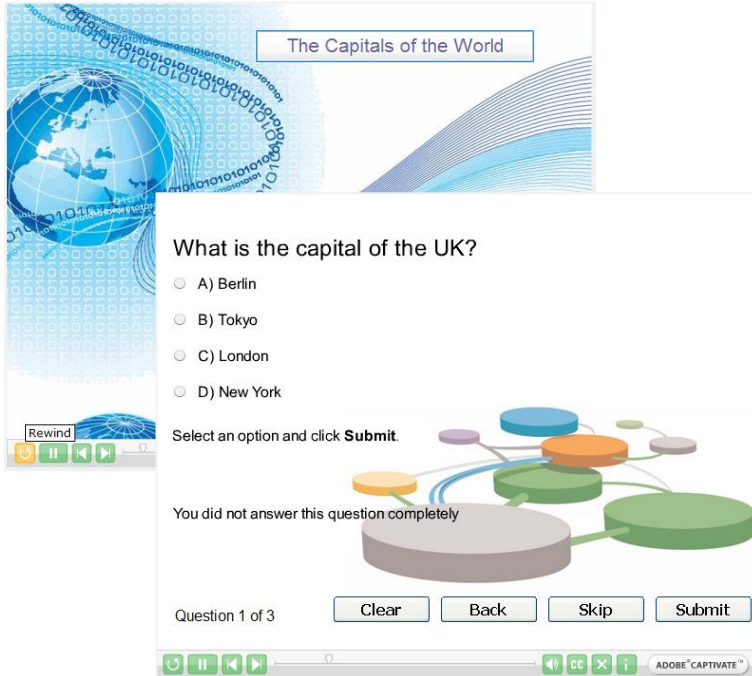
Next 

## Multimedia demos

- Demonstrate a product or service
- Illustrate step by step instructions
- Automated or requiring user interaction
- Combine video, audio and text
- Users can review at their own time and pace

## Quizzes and tests

- Allow delegates to review training material and test their understanding
- Evaluate the competency of delegates
- Provide an official record of competency



The Capitals of the World

What is the capital of the UK?

A) Berlin

B) Tokyo

C) London

D) New York

Select an option and click **Submit**

You did not answer this question completely

Question 1 of 3

Clear Back Skip Submit

4 of 4

ADOBE CAPTIVATE™

The screenshot shows a quiz interface with a blue and white background featuring a globe and binary code. The title 'The Capitals of the World' is at the top. The question asks for the capital of the UK, with four multiple-choice options: Berlin, Tokyo, London, and New York. A 'Submit' button is present. Below the question, a message states 'You did not answer this question completely'. At the bottom, there are navigation buttons for 'Clear', 'Back', 'Skip', and 'Submit', along with a progress indicator 'Question 1 of 3'. A footer shows '4 of 4' and 'ADOBE CAPTIVATE™'.